



## ARCH. CARLO SCOLARI

Email: [thecarloscolari@gmail.com](mailto:thecarloscolari@gmail.com)  
Mobile: +39 328 6710108  
[www.carloscolari.com](http://www.carloscolari.com)

### Resume

Carlo Scolari was born in 1981 in Bologna, Italy. In 2001 he moved to Milan where he graduated first in interior design and later in architecture. Since 2005 he has been working as a freelancer and collaborating with various professional studios.

His experience spaces from concept design to executive realizations of objects, exhibitions and architectural buildings. Carlo is a highly motivated, flexible and structured person. He enjoys working in a team but he's also determined and capable to take decisions if required.

He likes sailing, art and history.

### Education

2011 Master's Degree in Architecture, University of Politecnico, Milano, Italy

2006 Master's Degree in Interior Design, University of Bovisa School of Design, Milano, Italy

2005 International exchange project, PUC University, Rio de Janeiro, Brazil

### Professional experience

2016 collaboration with the architectural studio *Cleaa* of Claudio Lucchin, Bolzano, Italy

2014 - 2015 collaboration with the architect Daniele Rossi, Milano, Italy

2011 - 2014 freelancer activities

2009 - 2011 co-founder of the architectural studio *disegno mancino*, Milano, Italy

2007 - 2008 employed by the architect Marilinda Briganti, Terni, Italy

2005 - 2006 collaboration with architect Giovanna Franco Repellini, Milano, Italy

### Professional skills

Architectural and interior design

Detail and executive drawing

Project management and on-site supervisor

3D modelling and rendering

Bill of quantities and price list

### Software

Design: Autocad, DraftSight, Revit

3D modelling: SketchUp

Rendering: Artlantis Studio

Price list: 2K, PriMus

Graphic: Photoshop, Illustrator, InDesign

### Languages

Italian, English

# PROJECTS

<i>title</i>	<i>type</i>	<i>tasks</i>
<b>Architecture and public space</b>		
Urban square, Nola, 2016	open call	concept, preliminary design, rendering
Secondary school complex, Pavia, 2016	open call	preliminary design
• Hotel and restaurant, Como, 2015	preliminary	preliminary design
• Private villa, Noto, 2015	executive	technical drawings, bill of quantities
Private villa, Noto, 2014	executive	technical drawings, bill of quantities
Private villa, Noto, 2014	executive	technical drawings
Private villa, Como, 2014	executive	as built
• Kindergarten, Sluderno, 2012	open call	concept, preliminary design
• Urban square, Leffe, 2010	open call	concept, preliminary design, rendering
Office building requalification, Terni, 2008	preliminary	concept, preliminary design, rendering
Country house requalification, Terni, 2008	executive	preliminary design, technical drawings
• Office complex, Terni, 2007	executive	technical drawings, bill of quantities
• Building requalification, Milano, 2006	open call	preliminary design, rendering
<b>Interior and exhibit design</b>		
Exhibition, Milano, 2016	executive	supervision
• Private apartment, Milano, 2016	preliminary	concept, preliminary design, rendering
Building requalification, Ferrara, 2014	open call	concept, preliminary design, rendering
Fair stand, Frankfurt, 2014	executive	technical drawings, rendering
Private apartment, Milano, 2012	preliminary	concept, rendering
Festival exhibition, Terni, 2010	executive	concept, preliminary design, supervision
Fair stand, Torino, 2010	executive	concept, technical drawings
• Retail shop, Vigo di Thun, 2010	executive	concept, technical drawings, supervision
Private loft, Milano, 2009	executive	concept, technical drawings, supervision
Festival exhibition, Cesena, 2008	executive	concept, preliminary design, supervision
Private apartment, Terni, 2008	executive	concept, technical drawings, supervision
Gazebo, Terni, 2007	executive	concept, technical drawings, supervision
Laboratory requalification, Milano, 2006	preliminary	concept, preliminary design
<b>Object &amp; graphic design</b>		
• Book design, Aska Edizioni, Milano, 2016	preliminary	concept, layout
Corporate identity, Ferrara, 2016	executive	concept, logo
Book design for Raum Italic, Berlin, 2015	executive	concept, layout
Infographic, Mulino Bianco, Milano, 2010	executive	graphic design
• Candle and shave set, Milano, 2010	preliminary	concept, technical drawings
Home accessories, Milano, 2009	executive	concept, art direction
External curtains, Orbetello, 2007	executive	concept, technical drawings, supervision
Urban furniture for Autostrade Italia, 2006	preliminary	concept, rendering
Urban furniture for Serralunga, Milano, 2006	preliminary	concept, rendering

• Works shown in this portfolio.  
Other projects available on request

*Arch. Carlo Scolari*

# ARCHITECTURE

## PRIVATE VILLA

### Info

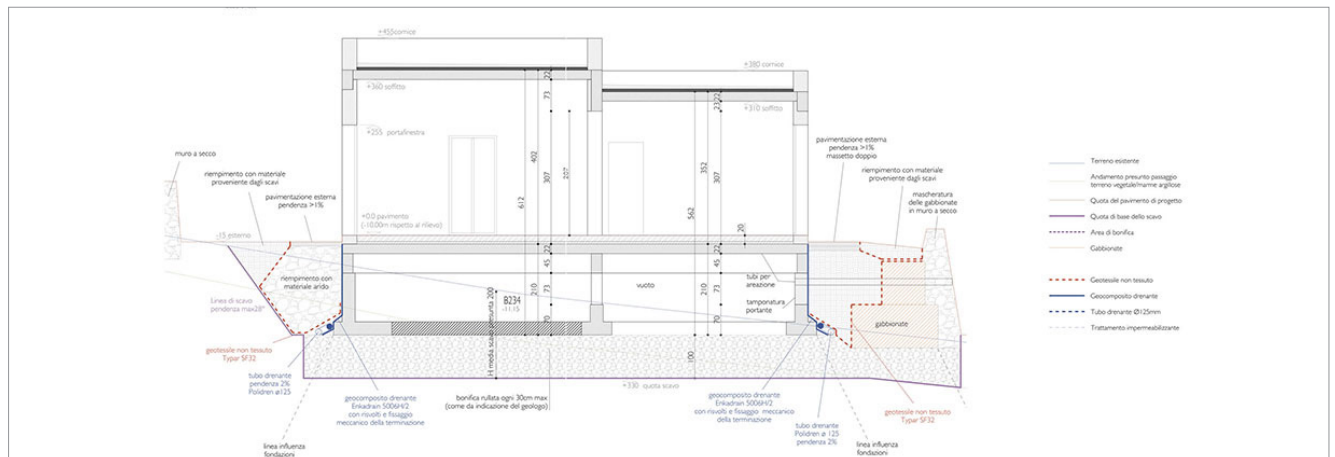
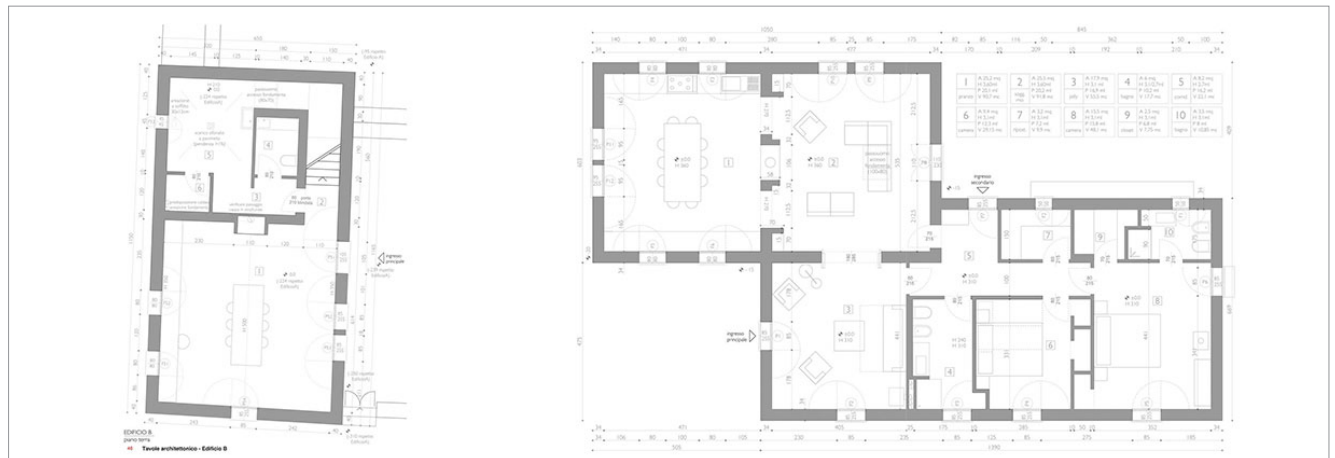
Executive project  
Noto, Italy. 2015  
With arch. D. Rossi

### Tasks

Technical drawings  
Bill of quantities

### Description

A private house in the deep of the Sicilian countryside. The work consisted of an executive project for a new building and in the requalification of a rural house, used as an artistic atelier.



Arch. Carlo Scolari

# ARCHITECTURE

## OFFICE COMPLEX

### Info

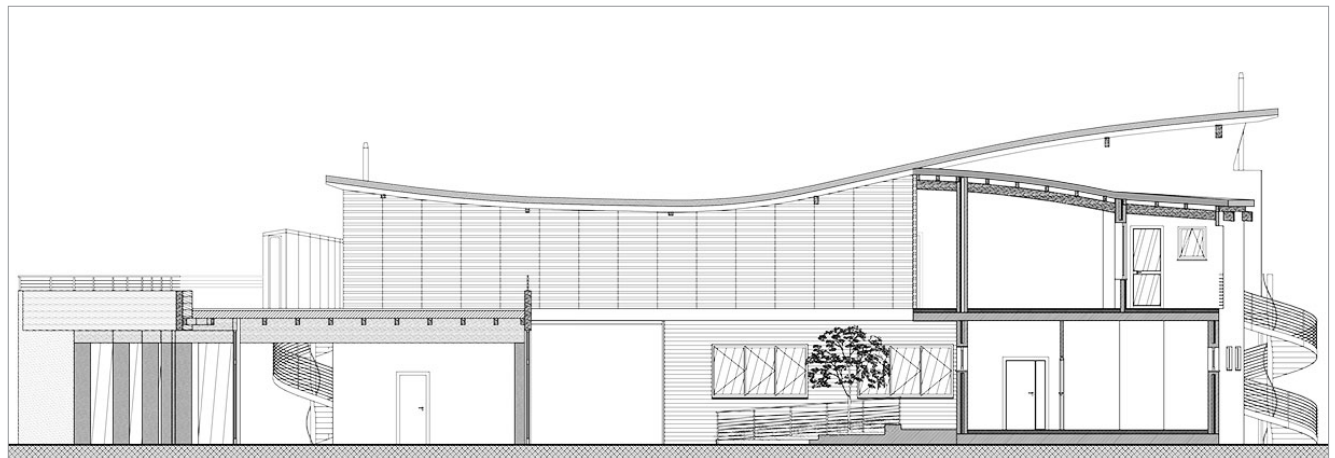
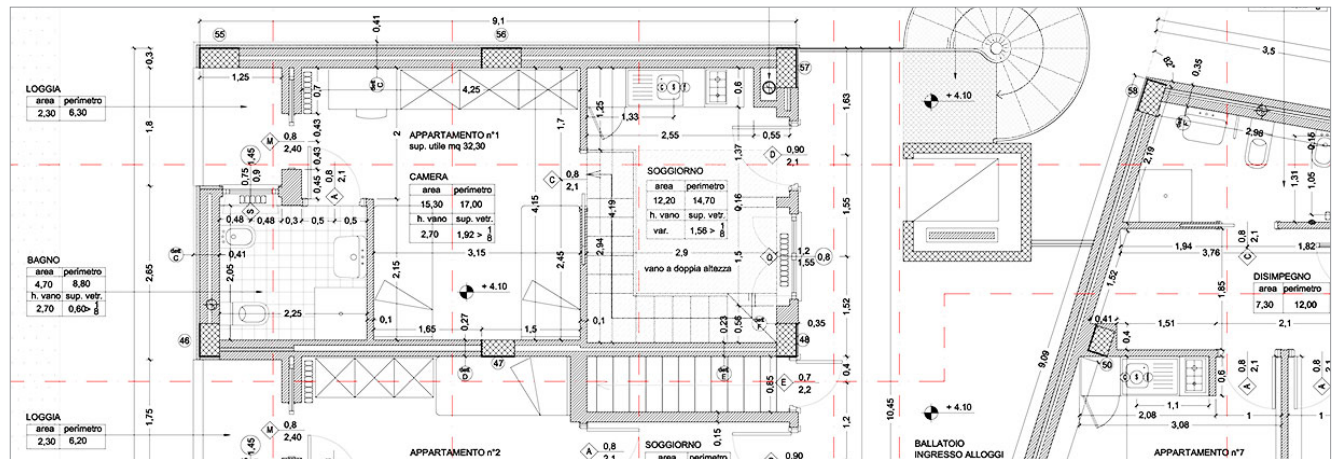
Executive project  
Terni, Italy. 2007  
With Marilinda Briganti Studio

### Tasks

Technical drawings  
Bill of quantities

### Description

A new complex of buildings used for conferences, laboratories and accommodations. Particular attention was on the construction elements, details and sustainability solutions.



Arch. Carlo Scolari

# ARCHITECTURE

## KINDERGARTEN

### Info

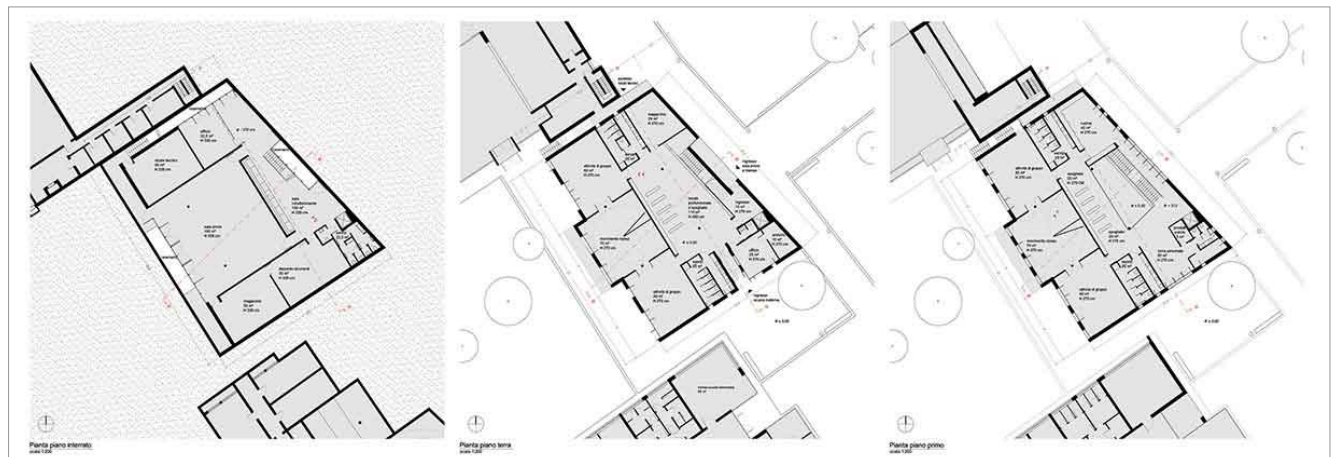
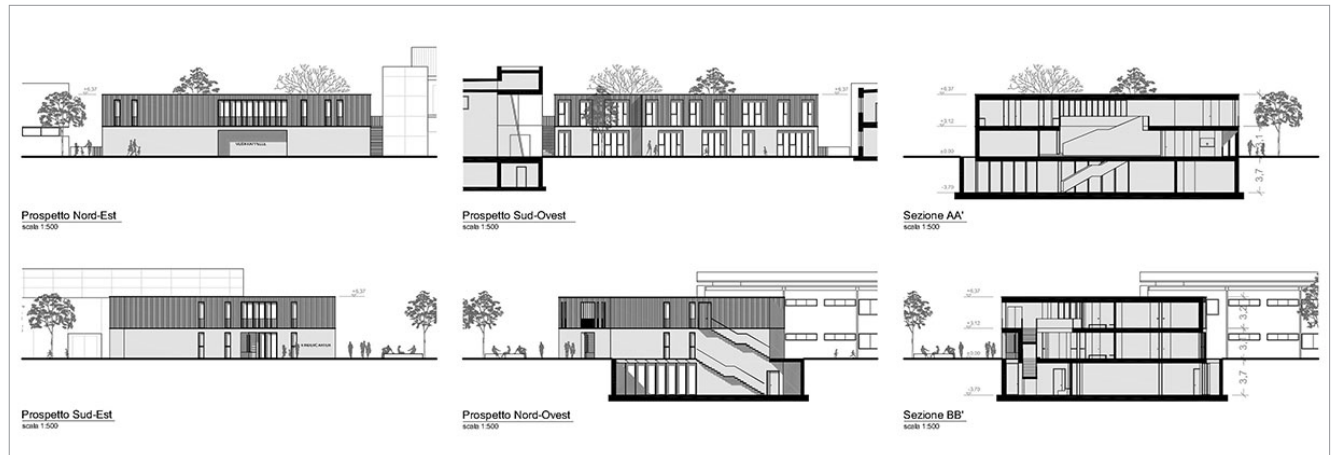
Open call. Honored mention  
Sluderno, Italy. 2012  
With arch. R. Belinci and arch. A. Baselli

### Tasks

Concept  
Preliminary design

### Description

A schoolhouse with a public hall placed in the basement. Interior spaces were designed around the big hall which is also used as a recreational area.



# ARCHITECTURE

## RESTAURANT

### Info

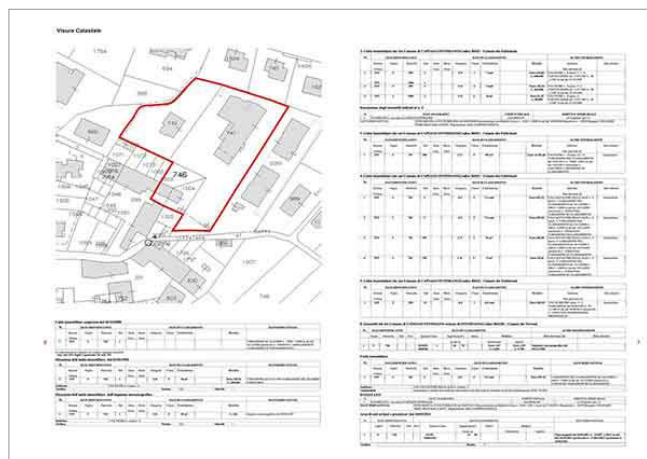
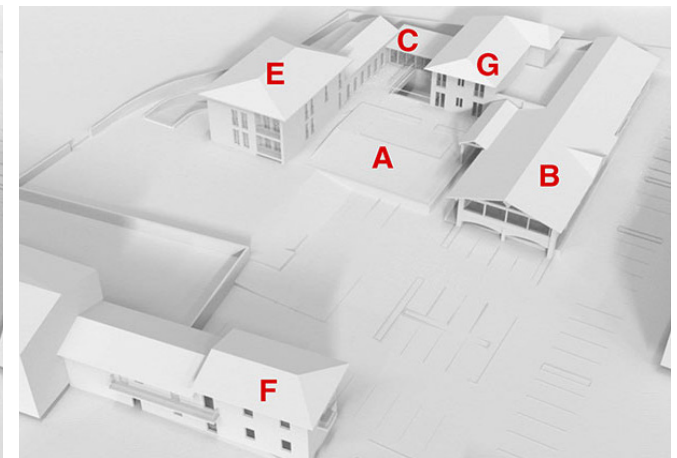
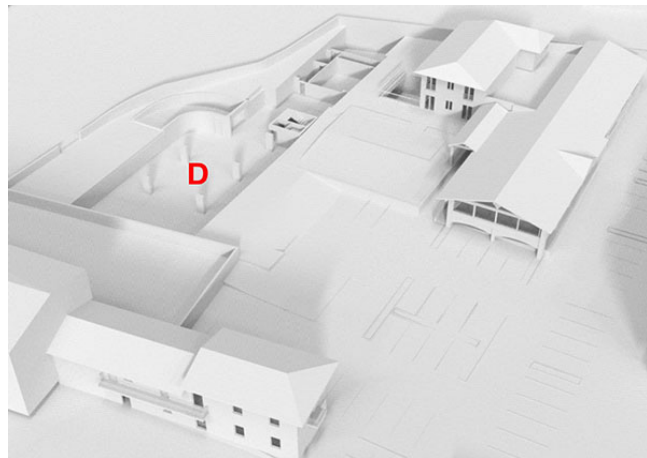
Preliminary design  
Como, Italy. 2015  
With arch. D. Rossi

### Tasks

Preliminary design

### Description

Preliminary project for a restaurant renovation and a new hotel. The concept was to recreate a court around a redesigned garden. The project also consisted of a feasibility study taking into account the whole Italian laws and local regulations.



# ARCHITECTURE

## BUILDING REQUALIFICATION

### Info

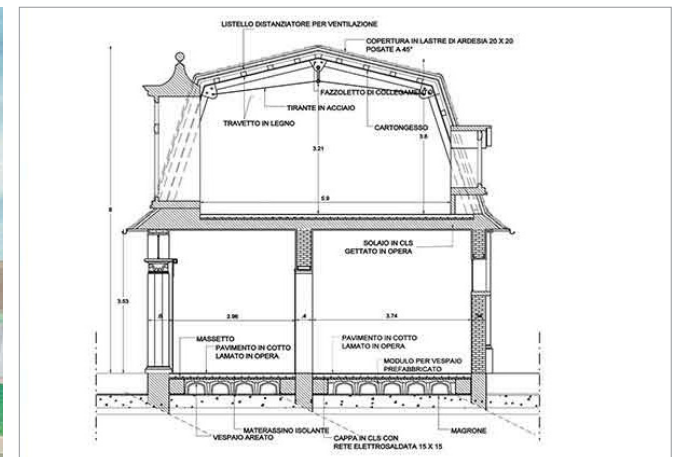
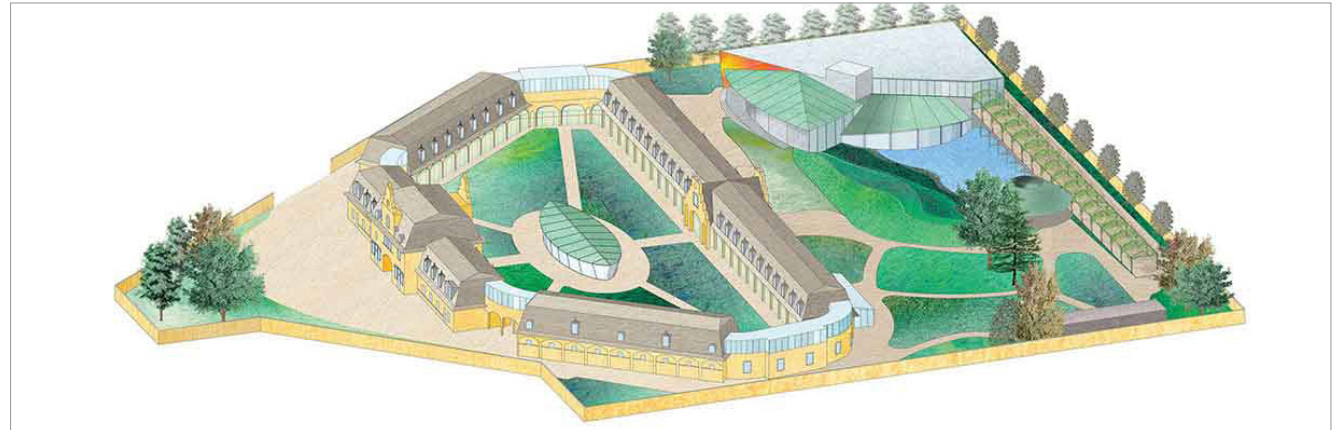
Open call. First prize won.  
Milan, Italy. 2006  
With arch. G. Franco Repellini

### Tasks

Preliminary design  
Rendering

### Description

Preliminary project for the requalification of an historical building. The idea was to use the thermal water present in the area to create a medical center with spa in the suggestive spaces of the liberty palace.



# ARCHITECTURE

## URBAN SQUARE

### Info

Open call

Leffe, Italy. 2010

With arch. R. Belinci and arch. A. Guicciardi

### Tasks

Concept

Preliminary design

Rendering

### Description

The main square of the town had to be redesigned. The pedestrian area has been expanded with a site-specific texture of the floor created by different stones.



Arch. Carlo Scolari



# INTERIOR DESIGN

## PRIVATE APARTMENT

### Info

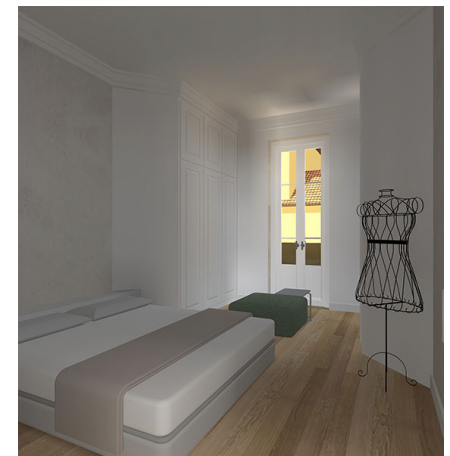
Preliminary project  
Milan, Italy. 2016

### Tasks

Concept  
Preliminary design  
Rendering

### Description

A preliminary interior design project with focus on details, materials, furniture and colours according to the historical context of the building.



Arch. Carlo Scolari

# INTERIOR DESIGN

## RETAIL SHOP

### Info

Executive project  
Vigo di Thun, Italy. 2010  
With arch. R. Belinci

### Tasks

Concept  
Technical drawings  
Supervision

### Description

In designing the display elements of a flag store for a honey company, the project took inspiration from nature and used natural and worked woods.



Arch. Carlo Scolari

# OBJECT DESIGN

## CANDLES AND SHAVE SET

### Info

Preliminary project

Milan, Italy. 2010

With arch. R. Belinci and A. Baselli

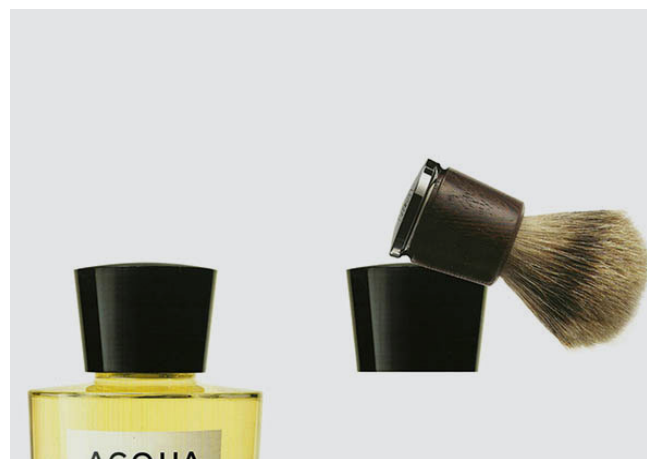
### Tasks

Concept

Technical drawings

### Description

A famous perfumes company requested a new line of candles and a new shave set. The design centered on decorated shapes inspired by the iconic elements of the company.



Arch. Carlo Scolari

# GRAPHIC DESIGN BOOK

## Info

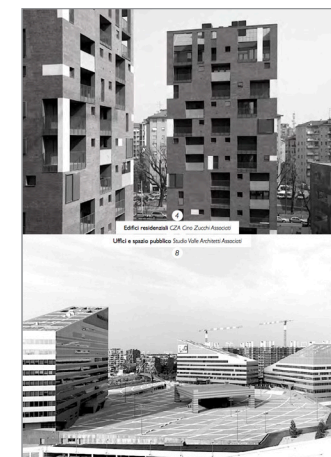
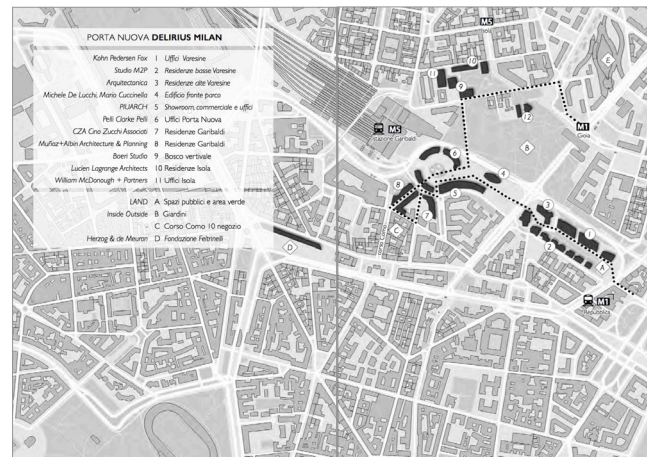
Preliminary project  
Milan, Italy. 2016

## Tasks

Concept  
Layout

## Description

Layout and graphics of a guide focused on the contemporary development of the city of Milan. The book covered different itineraries around the city and required substantial work on designing the included maps.



Tale frammentazione è una caratteristica specifica di tutto il comparto urbano nord ovest della città. Durante tutto il secolo scorso e fino ai nostri giorni, la storia di quest'area risulta caratterizzata da progetti circoscritti, che si sono stratificati l'uno sull'altro senza mai definire un'immagine unitaria. È stato così anche per il sito storico della Piazza D'Armi che ha avuto origine con il piano Beruto del 1884. L'architettura residenziale si è poi sviluppata in modo analogo. Oltre al QTB, nel periodo del primo e del secondo dopoguerra, numerosi quartieri sperimentali sono stati realizzati in questo comparto: tra questi il quartiere Illeg D'Armi di Albini, Camus, Palazzi, il quartiere per i rifugiati su via Alcide De Berti e il quartiere Iago Mangagalli di Albini e Gardella. La struttura che viene a costituirsi è a tutti gli effetti quella della Collage City discesa da Colin Rowe e Fred Koetter nel loro omonimo libro del 1979. Collage City sembra essere però anche il modello di riferimento assunto da Valle per il masterplan del Nuovo Portello.

Mento di questo progetto di recupero è prima di tutto la capacità di accettare in modo consapevole e radicale questa condizione frammentaria, senza slanci utopici ma anche senza nostalgia. Il progetto riesce così a riattivare la vitalità urbana del luogo e a rispettarne profondamente la natura. In progetti per molti aspetti comparabili come Porta Nuova e City Life è stato adottato un approccio molto diverso. Per ripensare l'assetto di queste grandi aree dismesse sono state impastate immagini di modernità d'effetto - Dubai o forse Hollywood - senza tentare alcun tipo di traduzione, rievocazione o naturalizzazione dell'invenzione. Queste architetture, anche quando sono di per sé riuscite, finiscono comunque per semplificare, nei peggiori casi per banalizzare, la percezione dei luoghi e della loro complessità. La città vera rimane ai margini, come una quinta teatrale di cui non è possibile realizzare l'effettiva profondità.

Al Portello questo non sembra accadere. La forza di attrazione centripeta che avvertiamo a Porta Nuova e a City Life sembra qui essere sostituita da un'opposta forza centrifuga, che spinge continuamente l'attenzione verso la città circostante. Una fitta trama di relazioni lega strettamente il Nuovo Portello alla città. Tra i singoli edifici e i loro specifici contesti si stabilisce un dialogo continuo di forme, di spazi e di immagini condivise. In questo modo, la collina di Chiaro prende dalga con il Monte Stella, gli edifici di Valle con le falde dell'edificio di terra della Fiera, le case di Zucchi con la tradizione stessa della residenza milanese del secolo scorso. Questo dialogo non è ideologico e non è nostalgico. I progetti si relazionano in modo programmatico con quello che trovano intorno, a prescindere dalla sua natura o qualità. L'idea di un centro, di un modello scapo dall'alto, è qui assente. Anzi, il centro del progetto è simbolicamente costituito da viale Serra, barriera ma anche collegamento, e dalle passerelle pedonali che ne permettono l'attraversamento. La frammentazione del progetto del Nuovo Portello, che risponde a sua volta alla frammentazione del sito su cui nasce, sembra permettere un'effettiva riqualificazione del tessuto urbano, risultato che una strategia più unitaria non avrebbe forse permesso.

Arch. Carlo Scolari